



**SEODOK  
MACHINERY**

# SHAFTLESS SPIRAL SCREW CONVEYORS



**EVERY SINGLE PART TELLS WHY SEODOK**

# SEODOK MACHINERY

SEODOK is a second generation, family owned business and operates machinery shop in Hwaseong-si, Gyeonggi-do, Korea.

In operation since 1980, with delivery history and work experience with over 100 companies, SEODOK has been manufacturing Plate Roll bending machine over 30 years.

In 2001, after thorough research and development, SEODOK successfully developed new machinery that manufactures Shaftless Spiral Screw blade which is the core component for Shaftless Spiral Screw conveyor.

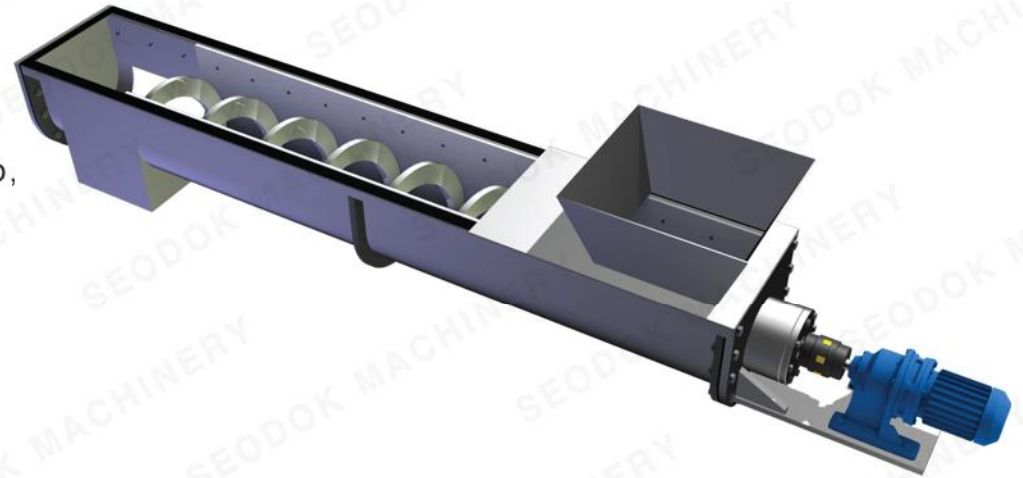
The degree of accuracy of Screw blades we manufacture has error range of (+0.5 ~ -1mm) and we are capable of manufacturing in various sizes to meet our client's needs

To this present day, SEODOK is regularly in business and a supplier to over 60 companies also SEODOK Machinery components are used and applied in majority water-recycling system in South Korea.

## Cooperative firm



Shaftless Spiral Screw is used in various kind of jobs, such as moving heavy substances like sand and gravel. also used to move along matters that gets easily tangled up, such as sludge or fur waste. It is commonly used in water recycling process plus many more criteria including civil engineering, chemistry and food production process.



▲ **Food Industry**



▲ **Paper Industry**

▼ **Chemical Industry**



**Civil Engineering** ▶



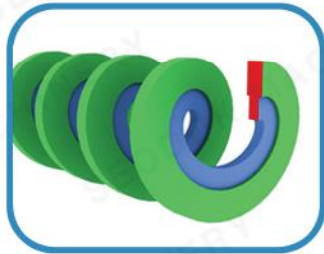
**Wast water handling** ▶

**A: Screw Blades**

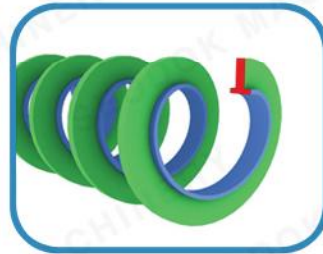
Screw blade is available in these materials;  
mild steel, STS304, STS316 or STS316L



*Single Screws*



*Dual Screws (reinforced)*



**B: Case**

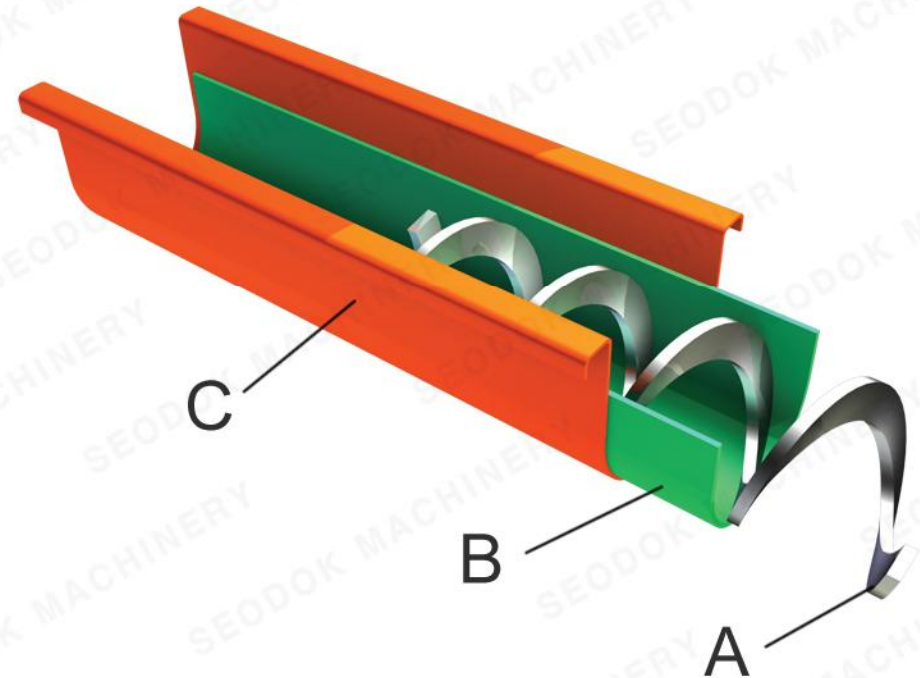
U-section case is available in these materials;  
mild steel, STS304, STS316 or STS316L

**C: Liner**

Liner is available in these materials;  
PE(Polyethylene) or UHMW-PE (Ultra High Molecular Weight Polyethylene)

**D: Powertrain**

Various types of power train is applicable such as  
Direct Geared Motor with Jow Couplings, Chain Gear and Worm gear



## Mild Steel / Stainless Steel AISI304 / AISI316 / AISI316L Shaftless Spiral Technical features and manufacturing tolerances

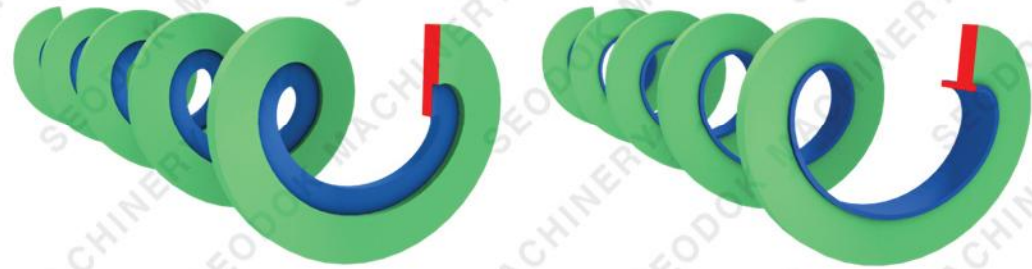
### Single Spiral Screw Blade (standard)



Normal Screw Diameter (mm/in.)	Technical fratures					Tolerances		
	Real EXT.DIA. (mm)	Drawm Falt bar 6000L (mm)	Internal DIA (mm/in.)	Spiral Length 1/1Pitch (mm/ft)	Spiral Length 2/3Pitch (mm/ft)	Spiral Length (mm/ft)	External DIA (mm)	Pitch (mm)
150 / 6	146	12T X 30W	86 / 3.3	1900 / 6.2	1400 / 4.6	+100 / +3	+0.5 / -1	+1.0 / -1.0
200 / 8	180	15/20T X 40W	100 / 4	1900 / 6.2	1400 / 4.6	+100 / +3	+1 / -1.5	+1.5 / -1.5
250 / 10	233	20T X 50W	133 / 5.2	1900 / 6.2	1400 / 4.6	+100 / +3	+1 / -1.5	+1.5 / -1.5
300 / 12	278	20T X 60W	158 / 6.2	1900 / 6.2	1400 / 4.6	+100 / +3	+1 / -1.5	+1.5 / -1.5
400 / 16	360	22/25T X 75W	210 / 8.2	1900 / 6.2	1400 / 4.6	+100 / +3	+1.5 / -2	+2.0 / -2.0
500 / 20	464	25T X 75W	314 / 12.3	1900 / 6.2	1400 / 4.6	+100 / +3	+1.5 / -2	+3.0 / -3.0

## Mild Steel / Stainless Steel AISI304 / AISI316 / AISI316L Shaftless Spiral Technical features and manufacturing tolerances

### Dual Spiral Screw Blade (reinforced)



Normal Screw Diameter (mm/in.)	Technical fratures						Tolerances		
	Real EXT.DIA. (mm)	External Drawm Falt bar 6000L (mm)	Internal Drawm Falt bar 4000L/6000L (mm)	Internal DIA (mm/in.)	Spiral Length 1/1Pitch (mm/ft)	Spiral Length 2/3Pitch (mm/ft)	Spiral Length (mm/ft)	External DIA (mm)	Pitch (mm)
150 / 6	146	12T X 30W	-	86 / 3.3	1900 / 6.2	1400 / 4.6	+100 / +3	+0.5 / -1	+1.0 / -1.0
200 / 8	180	15/20T X 40W	10T X 20W	60 / 2.3	1900 / 6.2	1400 / 4.6	+100 / +3	+1 / -1.5	+1.5 / -1.5
250 / 10	233	20T X 50W	12T X 30W	73 / 2.8	1900 / 6.2	1400 / 4.6	+100 / +3	+1 / -1.5	+1.5 / -1.5
300 / 12	278	20T X 60W	12T X 30W	88 / 3.4	1900 / 6.2	1400 / 4.6	+100 / +3	+1 / -1.5	+1.5 / -1.5
400 / 16	360	22/25T X 75W	20T X 50W	110 / 4.3	1900 / 6.2	1400 / 4.6	+100 / +3	+1.5 / -2	+2.0 / -2.0
500 / 20	464	25T X 75W	20T X 65W	184 / 7.6	1900 / 6.2	1400 / 4.6	+100 / +3	+1.5 / -2	+3.0 / -3.0

## Shaftless Screw Conveyors screening or granular solids chart

Diameter		Incline Range	Spiral Type	Length(maximum)		Capacity		Motor		Rotation
mm	In.			m	ft	m <sup>3</sup> / h	ft <sup>3</sup> / h	hP	kW	
150	6	0° ~ 15°	Standard	0 ~ 20	0 ~ 65.6	0.5	17.7	0.50	0.37	15
150	6	15° ~ 30°	Reinforced	0 ~ 20	0 ~ 65.6	0.3	10.6	0.75	0.55	15
200	8	0° ~ 15°	Standard	0 ~ 20	0 ~ 65.6	1.0	35.3	0.75	0.55	15
200	8	15° ~ 30°	Reinforced	0 ~ 20	0 ~ 65.6	0.6	21.2	0.75	0.55	15
250	10	0° ~ 15°	Standard	0 ~ 20	0 ~ 65.6	2.4	84.8	1.00	0.75	15
250	10	15° ~ 30°	Reinforced	0 ~ 20	0 ~ 65.6	1.1	38.8	1.50	1.10	15
300	12	0° ~ 15°	Standard	0 ~ 25	0 ~ 82.0	3.8	134.2	2.00	1.50	15
300	12	15° ~ 30°	Reinforced	0 ~ 25	0 ~ 82.0	1.8	63.6	2.00	1.50	15
400	16	0° ~ 15°	Standard	0 ~ 30	0 ~ 98.4	8.0	282.5	3.00	2.20	15
400	16	15° ~ 30°	Reinforced	0 ~ 30	0 ~ 98.4	3.8	134.2	3.00	2.20	15
500	20	0° ~ 15°	Standard	0 ~ 35	0 ~ 114.8	17.0	600.3	4.00	3.00	15
500	20	15° ~ 30°	Reinforced	0 ~ 35	0 ~ 114.8	8.0	282.5	4.00	3.00	15



## Shaftless Screw Conveyors sludge or slurry chart

Diameter		Incline Range	Spiral Type	Length(maximum)		Capacity		Motor		Rotation
mm	In.			m	ft	m <sup>3</sup> / h	ft <sup>3</sup> / h	hP	kW	
150	6	0° ~ 15°	Standard	0 ~ 20	0 ~ 65.6	1.5	53.0	0.75	0.55	29
150	6	15° ~ 30°	Reinforced	0 ~ 20	0 ~ 65.6	0.8	28.3	1.00	0.75	29
200	8	0° ~ 15°	Standard	0 ~ 20	0 ~ 65.6	3.0	105.9	1.00	0.75	29
200	8	15° ~ 30°	Reinforced	0 ~ 20	0 ~ 65.6	1.7	60.0	1.00	0.75	29
250	10	0° ~ 15°	Standard	0 ~ 20	0 ~ 65.6	7.0	247.2	2.00	1.50	29
250	10	15° ~ 30°	Reinforced	0 ~ 20	0 ~ 65.6	3.9	137.7	2.00	1.50	29
300	12	0° ~ 15°	Standard	0 ~ 25	0 ~ 82.0	11.0	388.5	3.00	2.20	29
300	12	15° ~ 30°	Reinforced	0 ~ 25	0 ~ 82.0	6.0	211.9	3.00	2.20	29
400	16	0° ~ 15°	Standard	0 ~ 30	0 ~ 98.4	23.0	812.2	4.00	3.00	29
400	16	15° ~ 30°	Reinforced	0 ~ 30	0 ~ 98.4	13.0	459.1	4.00	3.00	29
500	20	0° ~ 15°	Standard	0 ~ 35	0 ~ 114.8	45.0	1589.2	7.50	5.50	29
500	20	15° ~ 30°	Reinforced	35	0 ~ 114.8	26.0	918.2	7.50	5.50	29

## International Marketing Representative

Myung Ryu

Phone: +82-11-759-4258

## Head office

Jiwol-li 731-26

Paltahn-myeon

Hwasung, Gyeonggi

South Korea

ZIP: 445 917

Phone: +82-31-354-2980

Fax: +82-31-352-2841

e-mail: [seodok46@naver.com](mailto:seodok46@naver.com)